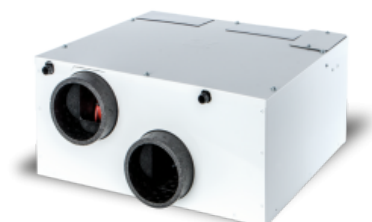


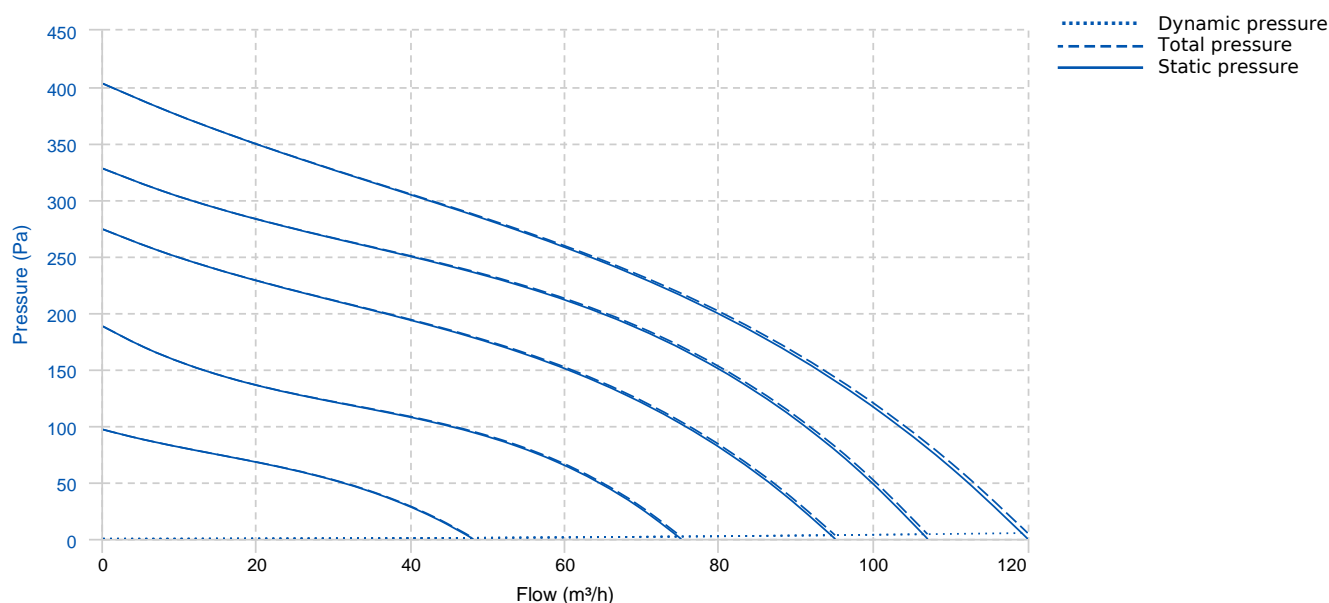
VORT INVISIBLE MINI TOP (EXP) (BP-HCS) (12219)

GENERAL DATA



- White painted steel sheet casing, including bracket fasteners, in galvanized steel sheet, supplied as standard and necessary for the suspended installation of the appliance; internal parts in expanded polypropylene (PPE).
- Inlet and outlet ducts compatible with nominal diameters of 100 mm and 125 mm.
- 2 brushless EC motors, each coupled to a forward centrifugal impeller; 3 independently adjustable speeds, managed by a control electronics that can also monitor any malfunctions that are recorded in the microcontroller on board the machine.
- Counter-current type high efficiency heat exchanger made of plastic material • Mechanical by-pass (BP models), 100% filtered, with automatic actuation (EVO and TOP models).
- Relative Humidity Sensor, for automatic management of operating speed (HCS models).
- Automatic activation system to prevent ice formation on the heat exchanger.
- Pair of ISO COARSE filters 45% (G3), placed at the extraction and delivery ducts; optionally ISO COARSE filters 65% (G4) are available for the extraction channel, ePM10 50% (M5), ePM1 55% (F7) and ePM1 80% (F9) for the delivery channel.
- Remote control unit with wired connection, complete with LCD display, for:
 - the initial product setting.
 - the start/shut down of the product.
 - the manual selection of the operating speed, among those previously set.
 - the setting of the function "BOOST ROOM LIGHT": the product automatically passes to Vmax, if connected to the lighting in the bathroom.
 - the display of the selected operating speed.
 - the display of automatic activation of the by-pass.
 - the display of the activation of the defrosting procedure.
 - the display of the automatic activation of the pre-heater (optional) installed.
 - the setting of the transition of operation to Vmax when combined with a presence sensor (PIR).
 - the display of saturated filter condition
 - the display of any error codes.
- Plastic resin condensate recovery tank with overfill sensor.

PERFORMANCE CURVE

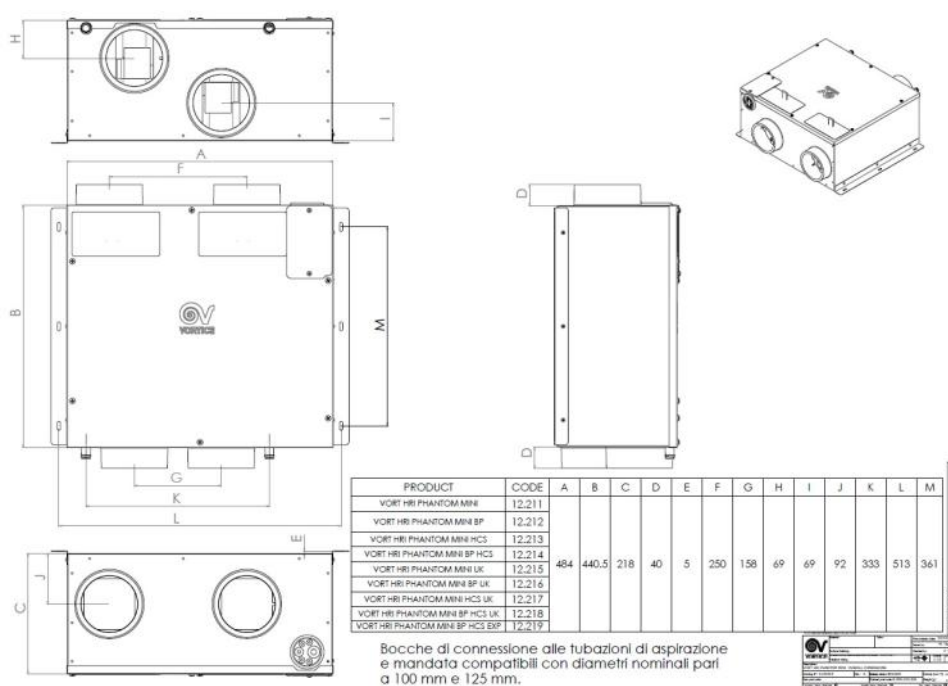


TECHNICAL DATA

Fan

RPM	-	Approx. weight	14 kg	Max. Flow	120 m³/h
-----	---	----------------	-------	-----------	----------

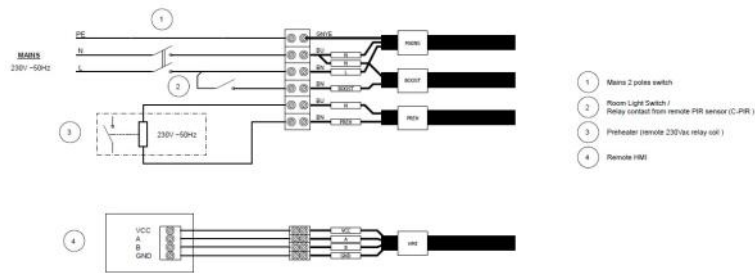
DIMENSIONS



Dimensions (mm)

A	484	B	440,5	C	218	D	40	E	5
F	250	G	158	H	69	I	69	J	92
K	333	L	513	M	361				

WIRING DIAGRAM



ACCESSORIES

FILTER
FTR EPM10 50% (M5) 208x127x25
REF: 21802

FILTER
FTR EPM1 55% (F7) 208x127x25
REF: 21803

FILTER
FTR EPM1 80% (F9) 208x127x25
REF: 21804

FILTER
FTR ISO COARSE 45% (G3) 206x132x5
REF: 21805

FILTER
FTR ISO COARSE 65% (G4) 206x132x5
REF: 21803

**CONTROLLER
CB TOUCH LCD W
REF: 21933**